

Item description/product images



Description

**Material:**  
Steel or stainless steel A2.

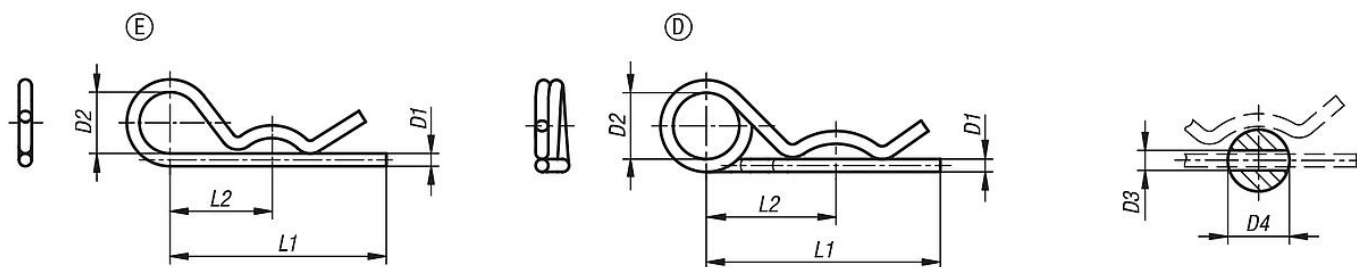
**Version:**  
Steel electro zinc-plated.  
Stainless steel bright.

**Note:**  
R-clips are used for securing bolts and axles. They are easy to install and can be reused. The ends have no sharp edges.

Double coil R-clips have a flatter spring characteristics and are easier to install. The double coil allows a tether cable to be attached to prevent loss.

**Drawing reference:**  
Form E: with single coil.  
Form D: with double coil (coil direction can differ from the drawing).

Drawings



Overview of items

Order No.	Main material	Form	D1	D2	D3	D4=for screw Ø	L1	L2
07337-11200	steel	E	2	10	2,5	9-14	50	25
07337-11300	steel	E	3	18	3,5	10-16	60	28
07337-11400	steel	E	4	20	4,5	16-20	60	30
07337-11500	steel	E	5	24	6	20-28	85	40
07337-11600	steel	E	6	30	7	28-40	105	50
07337-11700	steel	E	7	30	8	28-45	105	50
07337-21200	stainless steel A2	E	2	10	2,5	7-8	40	25
07337-21250	stainless steel A2	E	2,5	11	3	10-16	46	24
07337-21300	stainless steel A2	E	3	16	3,5	16-18	60	34
07337-21400	stainless steel A2	E	4	19	4,5	18-20	64	36
07337-21500	stainless steel A2	E	5	26	6	20-28	82	45
07337-21600	stainless steel A2	E	6	30	7	28-40	110	60
07337-12225	steel	D	2,25	20	2,5	9-11,2	42	24
07337-12280	steel	D	2,8	20	3,2	11,2-14	48	26
07337-12360	steel	D	3,6	20	4	14-20	64	32
07337-12450	steel	D	4,5	25	5	20-26	80	39
07337-12560	steel	D	5,6	25	6,3	26-34	97	45
07337-12630	steel	D	6,3	30	7	34-45	125	56
07337-12700	steel	D	7	30	8	45-56	150	63
07337-22225	stainless steel A2	D	2,25	20	2,5	7-9	42	24
07337-22280	stainless steel A2	D	2,8	20	3,2	11-14	48	26
07337-22360	stainless steel A2	D	3,6	20	4	14-20	64	32
07337-22450	stainless steel A2	D	4,5	25	5	20-26	80	39
07337-22560	stainless steel A2	D	5,6	25	6,3	26-34	97	45

