

Item description/product images



Description

Material:

Steel.

Version:

Electro zinc-plated and trivalent blue passivated.

Note:

Adapter plates can be used in combination with toggle clamps. They enable toggle clamps to be positioned flexibly.

The adapter plates are clamped to the machine table using eccentric clamp modules.

Advantages:

Flexible movement and positioning.

Flexible height construction using the adapter block.

Easy assembly through the opening in Form B.

Accessory:

Eccentric clamp modules 10500

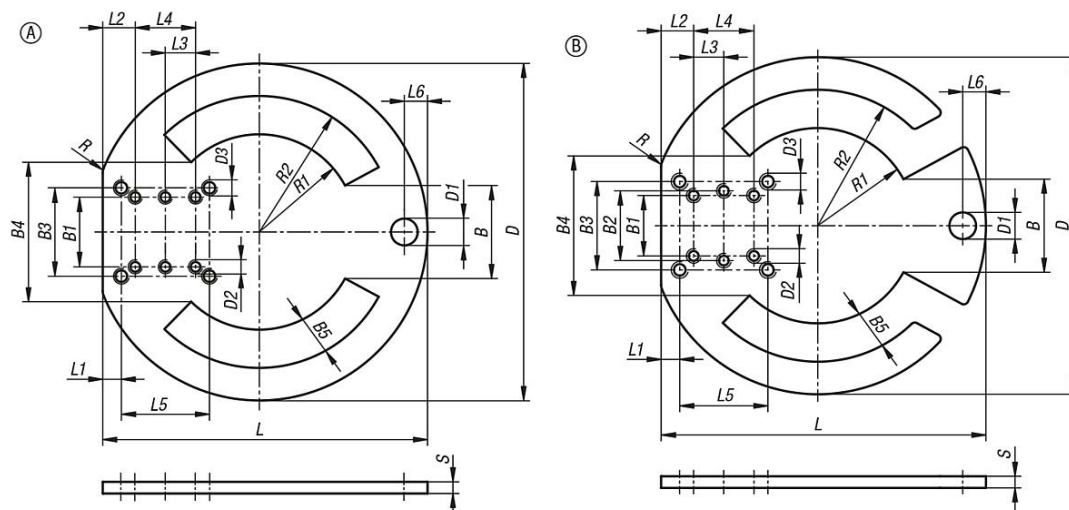
Toggle clamp 05....

Drawing reference:

Form A: closed

Form B: open

Drawings



Overview of items

Order No.	Item
05312-145	Adapter Plate