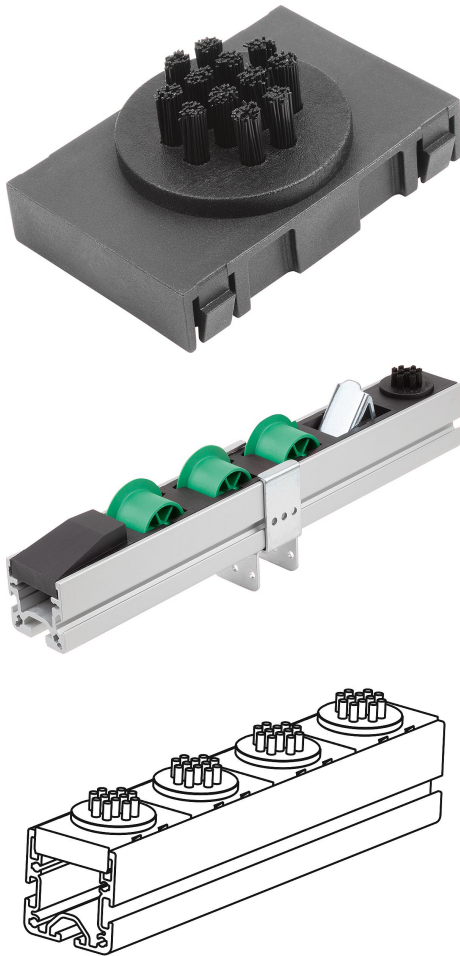


Item description/product images



Description

Material:

Polyamide fibres.
Polypropylene brush head.
Polyamide cage, carbon-fibre reinforced.

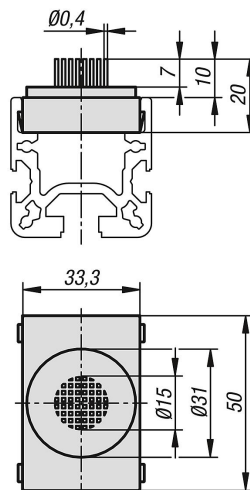
Version:

Black.

Note:

The brush element is matched to the aluminium profiles for roller rails and can be mounted on them quickly and easily.
With the elastic brush fibres, scratch-sensitive objects can be moved flexibly in two dimensions.
No tools required. Suitable for aluminium profiles Type B and I.

Drawings



Overview of items

Order No.	Load capacity N
10448-04-15	100

