

Item description/product images

**Description****Material:**

Locating pin and wedges steel 1.0715.
Shaft collar steel.

Version:

Locating pin and shaft collar phosphated.
Wedges black oxidised.
Lasered division marks.

Note:

By tightening the screw the two wedges expand in the bore. The infinitely adjustable shaft collar enables one or more stop elements with various thicknesses to be securely fixated.

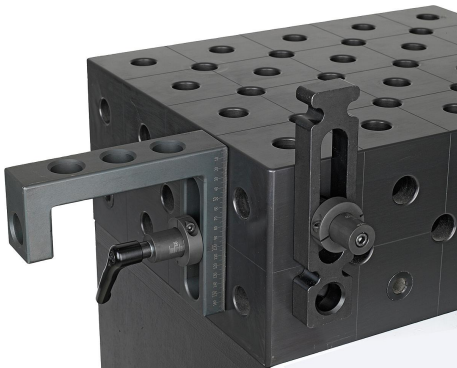
Application:

These clamping pins are perfect for fixing standard stop elements with various thicknesses to hole grid boards / welding tables with hole \varnothing 16 mm or 28 mm.

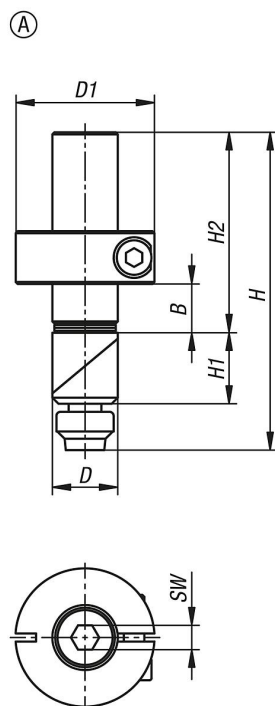
Advantages:

Infinitely adjustable clamping range of 0-36 mm and 0-75 mm.
Not affected by the diameter or surface quality of the bore (up to H12).
Clamping range can be easily preset using the scale.
Gentle clamping in the bore.
Pull-down effect even with thin table material (≥ 8 mm or ≥ 4 mm).
Compatible with conventional stop elements.

Item description/product images



Drawings



Overview of items

Order No.	Form	D	D1	H	H1	H2	SW	B Clamp range
04753-0016	A	16	34	78	17,5	49	6	0-36
04753-0028	A	28	48	129	28	90	6	0-75