

Item description/product images

**Description****Material:**

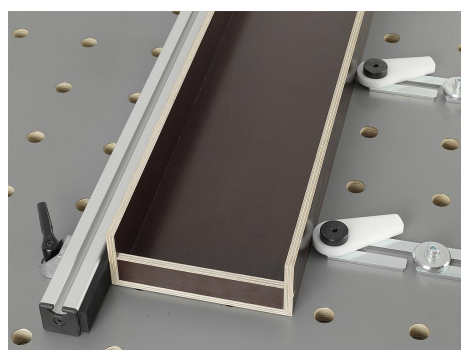
Pivot bearing steel 1.0715.
Threaded pin steel.

Version:

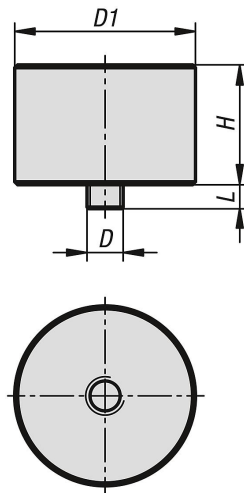
Pivot bearing black oxidised. Screw electro zinc-plated.

Note:

Pivot bearings are used in combination with plates and a cam clamp for indirect clamping.



Drawings



Overview of items

Order No.	D	D1	H	L
04757-3006X04	M6	30	20	4