

Item description/product images

INCH
Parts

Description

Material:

Knobs thermoset PF 31.

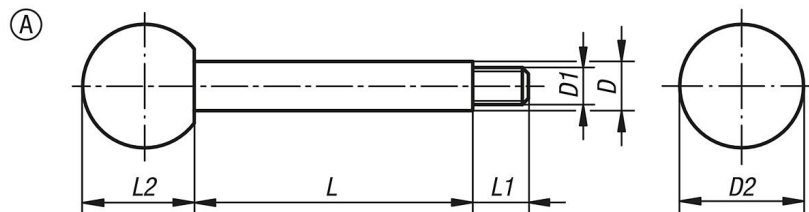
Rod steel or stainless steel 1.4305.

Version:

Thermoset black, high-gloss polished.

Steel black oxidised or bright stainless steel.

Drawings



Overview of items

Handles inch

Order No.	Main material	Form	D	D1	D2	L	L1	L2
06360-2A2X35	steel	A	8	1/4-20	20	35	9	18
06360-2A2X50	steel	A	8	1/4-20	20	50	9	18
06360-2A2X65	steel	A	8	1/4-20	20	65	9	18
06360-2A3X50	steel	A	10	5/16-18	25	50	13	22,5
06360-2A3X65	steel	A	10	5/16-18	25	65	13	22,5
06360-2A3X80	steel	A	10	5/16-18	25	80	13	22,5
06360-2A3X100	steel	A	10	5/16-18	25	100	13	22,5
06360-2A4X65	steel	A	12	3/8-16	32	65	15	29
06360-2A4X80	steel	A	12	3/8-16	32	80	15	29
06360-2A4X100	steel	A	12	3/8-16	32	100	15	29
06360-2A4X125	steel	A	12	3/8-16	32	125	15	29
06360-2A5X80	steel	A	14	1/2-13	36	80	16	33
06360-2A5X100	steel	A	14	1/2-13	36	100	16	33
06360-2A5X125	steel	A	14	1/2-13	36	125	16	33
06360-2A5X160	steel	A	14	1/2-13	36	160	16	33
06360-12A2X35	stainless steel	A	8	1/4-20	20	35	9	18
06360-12A2X50	stainless steel	A	8	1/4-20	20	50	9	18
06360-12A2X65	stainless steel	A	8	1/4-20	20	65	9	18
06360-12A3X50	stainless steel	A	10	5/16-18	25	50	13	22,5
06360-12A3X65	stainless steel	A	10	5/16-18	25	65	13	22,5
06360-12A3X80	stainless steel	A	10	5/16-18	25	80	13	22,5
06360-12A3X100	stainless steel	A	10	5/16-18	25	100	13	22,5
06360-12A4X65	stainless steel	A	12	3/8-16	32	65	15	29
06360-12A4X80	stainless steel	A	12	3/8-16	32	80	15	29
06360-12A4X100	stainless steel	A	12	3/8-16	32	100	15	29
06360-12A4X125	stainless steel	A	12	3/8-16	32	125	15	29
06360-12A5X80	stainless steel	A	14	1/2-13	36	80	16	33
06360-12A5X100	stainless steel	A	14	1/2-13	36	100	16	33
06360-12A5X125	stainless steel	A	14	1/2-13	36	125	16	33
06360-12A5X160	stainless steel	A	14	1/2-13	36	160	16	33

Overview of items
