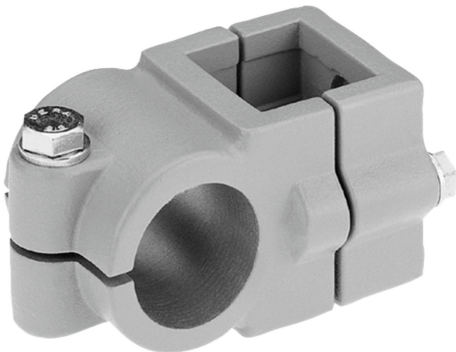


Item description/product images

INCH
Parts



Description

Material:

Cast aluminium.
Screws and nuts steel.

Version:

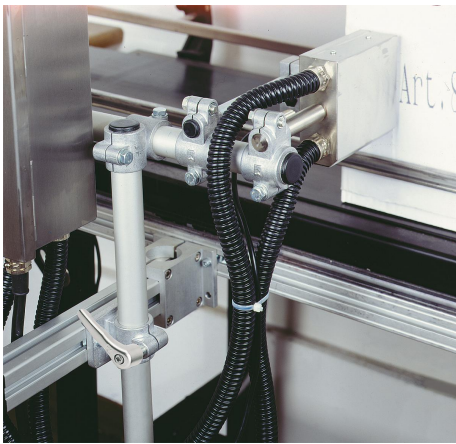
Vibratory ground.
Screws and nuts electro zinc-plated.

Note:

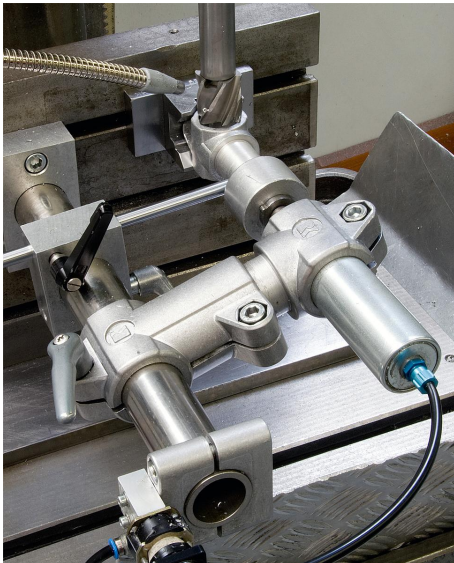
The dimensions for A and B are in inches, all other dimensions are in mm.

On request:

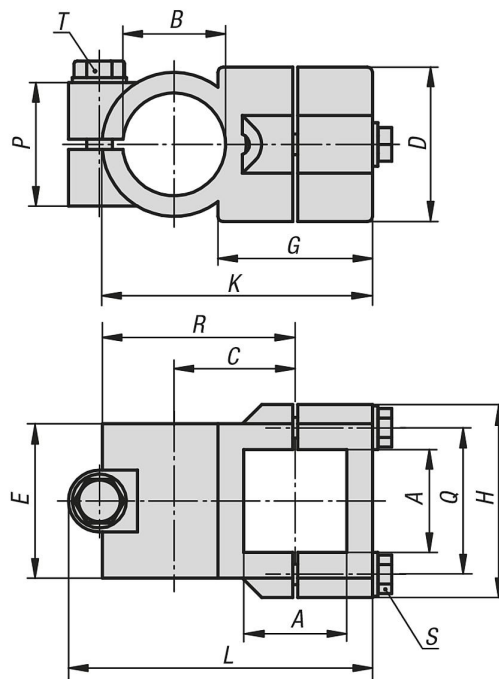
Clamping levers for tightening.



Item description/product images



Drawings



Overview of items

Order No.	A	B	C	D	E	G	H	K	L	P	Q	R	S	T
29004-5CSCS	1	1	33	45	45	40	62	76	86	33	46	55	M8x35	M8x35

