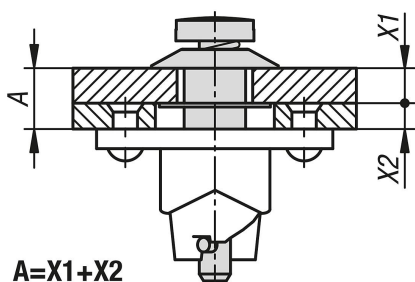


Item description/product images



Description

Material:

Steel.

Version:

Electro zinc-plated.

Note:

Quarter-turn latches for securely holding and locking hatches, container lids, machine covers and similar. The lock is closed or opened by turning it through 90°. This moves the cross pin in the locking bolt through a curve in the bottom part of the lock, thus tensioning the spring. At the end point of the curve there is a little recess in which the cross pin engages. The pretensioning force generated in the lock by the spring ensures that the connection is held securely despite any vibrations.

All components in the locking system (locking bolt, retaining washer and bottom part) are captive components which are joined to the cover or the frame.

They are operated through the cross slot.

The quarter turn latch always consists of a 1/4 turn lock, retaining washer and lock bottom part.

Technical data:

Maximum tractive force 1300 N.

Assembly:

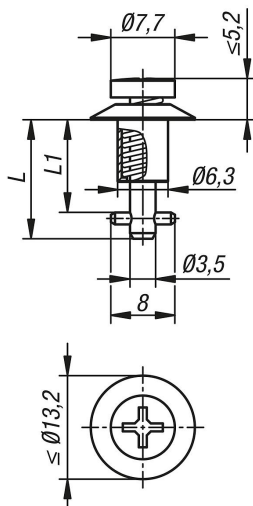
A hole of 8 mm is drilled through the cover, the bolt with cross pin are pushed through and secured to the retaining washer from the rear. A 13 mm centre hole is drilled in the frame, with two mounting holes which depend on the hole pattern in the bottom part.

Accessory:

Retaining washers 05592-51.

Lock bottom part 05592-52.

Drawings



Overview of items

Order No.	A	L	L1
05592-50-111015	0,75 - 1,50	14,95	10,15
05592-50-111090	1,50 - 2,25	14,95	10,9
05592-50-111165	2,25 - 3,00	14,95	11,65
05592-50-111240	3,00 - 3,75	17,2	12,4
05592-50-111315	3,75 - 4,50	17,2	13,15
05592-50-111390	4,50 - 5,25	17,2	13,9
05592-50-111465	5,25 - 6,00	19,45	14,65
05592-50-111540	6,00 - 6,75	19,45	15,4
05592-50-111615	6,75 - 7,50	19,45	16,15
05592-50-111690	7,50 - 8,25	21,7	16,9
05592-50-111765	8,25 - 9,00	21,7	17,65
05592-50-111840	9,00 - 9,75	21,7	18,4
05592-50-111915	9,75 - 10,50	23,95	19,15
05592-50-111990	10,50 - 11,25	23,95	19,9
05592-50-112065	11,25 - 12,00	23,95	20,65
05592-50-112140	12,00 - 12,75	26,2	21,4
05592-50-112215	12,75 - 13,50	26,2	22,15
05592-50-112290	13,50 - 14,25	26,2	22,9
05592-50-112365	14,25 - 15,00	28,45	23,65
05592-50-112440	15,00 - 15,75	28,45	24,4
05592-50-112515	15,75 - 16,50	28,45	25,15
05592-50-112590	16,50 - 17,25	30,7	25,9
05592-50-112665	17,25 - 18,00	30,7	26,65
05592-50-112740	18,00 - 18,75	30,7	27,4
05592-50-112815	18,75 - 19,50	32,95	28,15
05592-50-112890	19,50 - 20,25	32,95	28,9
05592-50-112965	20,25 - 21	32,95	29,65