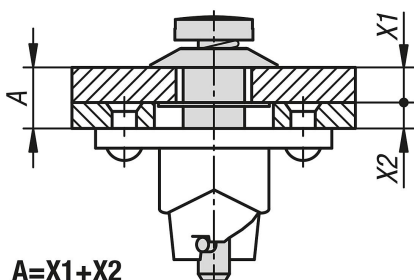


Item description/product images



Description

Material:

Steel.

Version:

Electro zinc-plated.

Note:

Quarter-turn latches for securely holding and locking hatches, container lids, machine covers and similar. The lock is closed or opened by turning it through 90°. This moves the cross pin in the locking bolt through a curve in the bottom part of the lock, thus tensioning the spring. At the end point of the curve there is a little recess in which the cross pin engages. The pretensioning force generated in the lock by the spring ensures that the connection is held securely despite any vibrations.

All components in the locking system (locking bolt, retaining washer and bottom part) are captive components which are joined to the cover of the frame.

They are operated through a slot.

The quarter turn latch is always made up of a 1/4 turn lock, retaining washer and lock bottom part.

Technical data:

Maximum tractive force 1300 N.

Assembly:

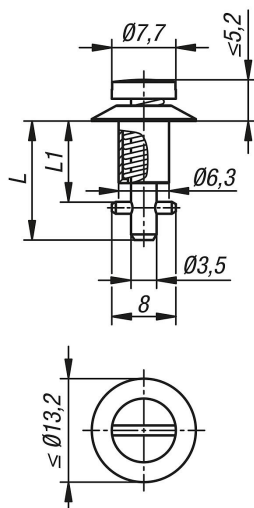
A hole of 8 mm is drilled through the cover, the bolt with cross pin are pushed through and secured to the retaining washer from the rear. A 13 mm centre hole is drilled in the frame, with two mounting holes which depend on the hole pattern in the bottom part.

Accessory:

Retaining washers 05592-51.

Lock bottom part 05592-52.

Drawings



Overview of items

Order No.	A	L	L1
05592-50-211015	0,75 - 1,50	14,95	10,15
05592-50-211090	1,50 - 2,25	14,95	10,9
05592-50-211165	2,25 - 3,00	14,95	11,65
05592-50-211240	3,00 - 3,75	17,2	12,4
05592-50-211315	3,75 - 4,50	17,2	13,15
05592-50-211390	4,50 - 5,25	17,2	13,9
05592-50-211465	5,25 - 6,00	19,45	14,65
05592-50-211540	6,00 - 6,75	19,45	15,4
05592-50-211615	6,75 - 7,50	19,45	16,15
05592-50-211690	7,50 - 8,25	21,7	16,9
05592-50-211765	8,25 - 9,00	21,7	17,65
05592-50-211840	9,00 - 9,75	21,7	18,4
05592-50-211915	9,75 - 10,50	23,95	19,15
05592-50-211990	10,50 - 11,25	23,95	19,9
05592-50-212065	11,25 - 12,00	23,95	20,65
05592-50-212140	12,00 - 12,75	26,2	21,4
05592-50-212215	12,75 - 13,50	26,2	22,15
05592-50-212290	13,50 - 14,25	26,2	22,9
05592-50-212365	14,25 - 15,00	28,45	23,65
05592-50-212440	15,00 - 15,75	28,45	24,4
05592-50-212515	15,75 - 16,50	28,45	25,15
05592-50-212590	16,50 - 17,25	30,7	25,9
05592-50-212665	17,25 - 18,00	30,7	26,65
05592-50-212740	18,00 - 18,75	30,7	27,4
05592-50-212815	18,75 - 19,50	32,95	28,15
05592-50-212890	19,50 - 20,25	32,95	28,9
05592-50-212965	20,25 - 21	32,95	29,65