

## Item description/product images



## Description

## Material:

Carbon steel 1.1191

## Version:

Black oxidised.

## Note:

T-slot keys are used for positioning fixture components quickly and exactly. The time-consuming work to align components is no longer required.

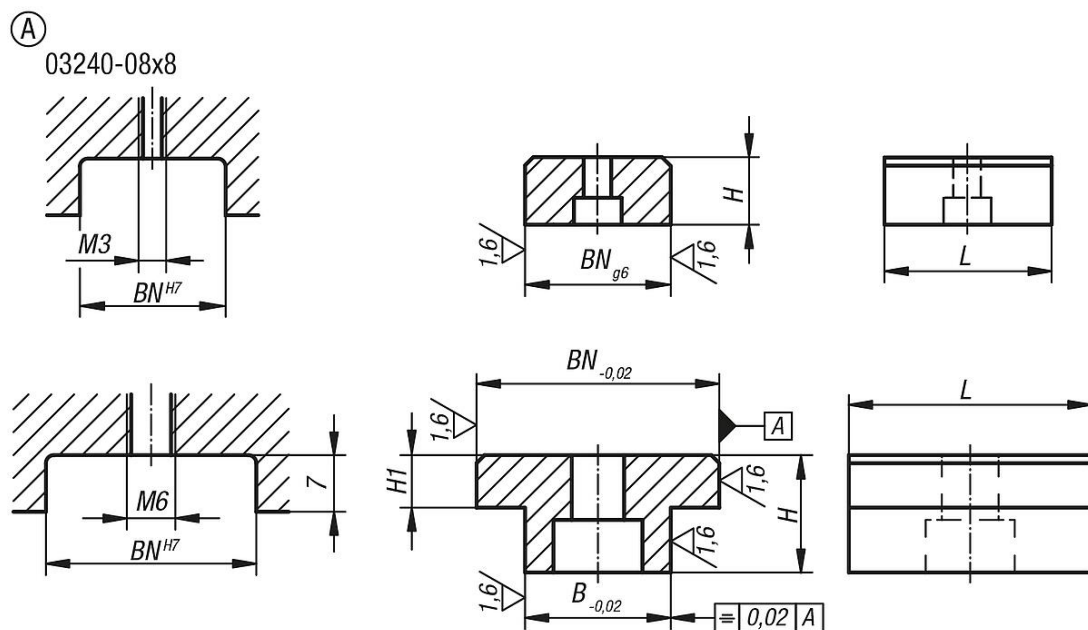
## Application:

The T-slot keys are screwed into a slot with the fixture components and then marked out on the counterpiece.

## Advantages:

Very time-saving when mounting fixture components.

## Drawings



## Overview of items

Order No.	Form	Form definition	BN=Slot width	B	H	H1	L
03240-08X8	A	single	8	8	8	-	20
03240-12X20	A	single	20	12	14	6	30
03240-12X22	A	single	22	12	14	6	30
03240-12X30	A	single	30	12	14	6	30
03240-14X20	A	single	20	14	14	6	30
03240-14X22	A	single	22	14	14	6	30
03240-14X30	A	single	30	14	14	6	30
03240-16X20	A	single	20	16	14	6	30
03240-16X22	A	single	22	16	14	6	30
03240-16X30	A	single	30	16	14	6	30
03240-18X20	A	single	20	18	14	6	30
03240-18X22	A	single	22	18	14	6	30
03240-18X30	A	single	30	18	14	6	30

## Overview of items

Order No.	Form	Form definition	BN=Slot width	B	H	H1	L
03240-22X20	A	single	20	22	14	6	30
03240-22X22	A	single	22	22	14	6	30
03240-22X30	A	single	30	22	14	6	30