

Item description/product images

**Description****Material:**

Body aluminium.
Fastener stainless steel.
Fastening screw steel.

Version:

Body hard-coated.
Fasteners bright.
Fastening screw electro zinc-plated.

Note:

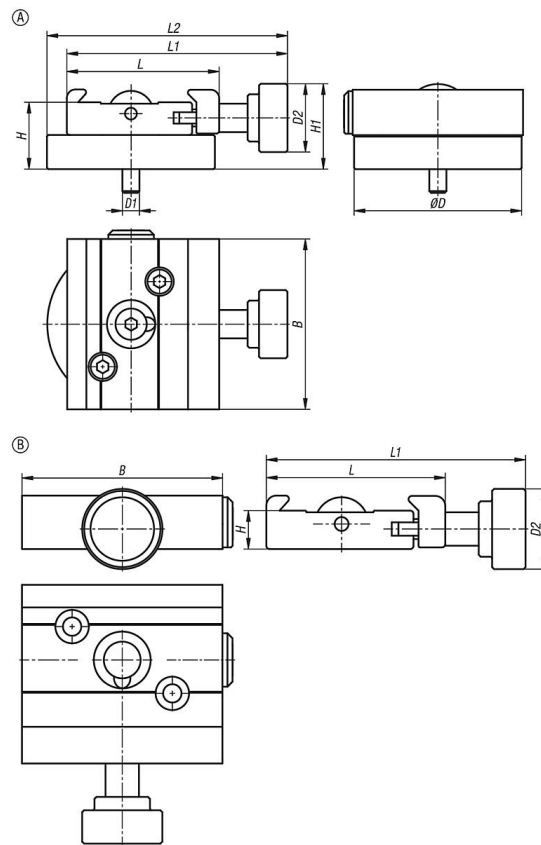
The quick-action clamps serve as the basis of a quick-change system. The quick-action clamps can be mounted directly onto a machine table or baseplate via a tapped hole. The quick-action clamp can be joined to the adapters or angle elements without the use of tools.

The quick-action clamp is also available without intermediate plate.

Accessory:

Quick-action clamp with angle element 33227-10.
Rotatable quick-action clamp with angle element 34007.
Rotatable quick-action clamp 34007-02.
Precision vice 33225-5003511.
Precision centric vice 34010.
Adapter 33225-20.
Precision 3-jaw chuck 34011.
Adapter 33226-05.
Needle support 33227.
Small part clamp 34012.
Magnetic V-block 34013.
V-block with spring finger 34013-05.
V-block 34013-10.
Clamping plate 34032.

Drawings



Overview of items

Order No.	Form	Form definition	B	D	D1	D2	H	H1	L	L1	L2
33227-05-105	A	with fastening screw	60	59	M5	24	23,5	30	53,5	77,5	84,5
33227-05-106	A	with fastening screw	60	59	M6	24	23,5	30	53,5	77,5	84,5
33227-05-108	A	with fastening screw	60	59	M8	24	23,5	30	53,5	77,5	84,5
33227-05-110	A	with fastening screw	60	59	M10	24	23,5	30	53,5	77,5	84,5
33227-05-112	A	with fastening screw	60	59	M12	24	23,5	30	53,5	77,5	84,5
33227-05-0	B	without fastening screw	60	-	-	24	11,5	-	53,5	77,5	-