

## Item description/product images



## Description

**Material:**

Carbon steel.

**Version:**

Black oxidised.

**Note:**

Dimension A refers to the distance from the workpiece to screw centre (cam screw).

Form B with clamp plate is recommended to minimise scratches on the workpiece.

**Advantages:**

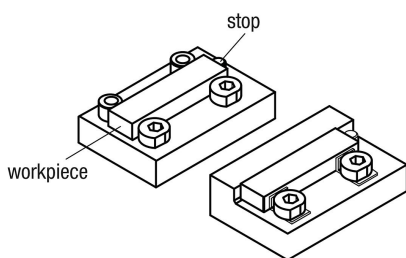
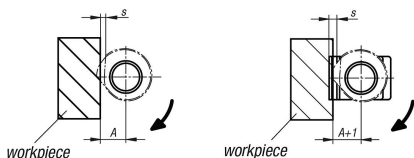
- Compact design
- Quick and easy clamping of components

**Accessory:**

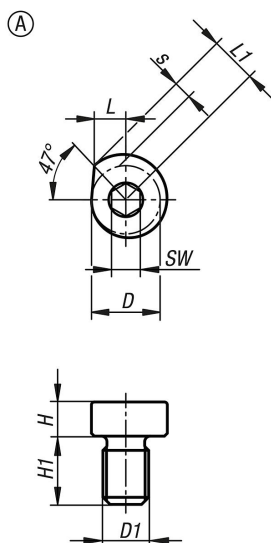
Clamping plate 04431-15.

**Drawing reference:**

(1) clamping plate



## Drawings



## Overview of items

Order No.	Form	Form definition	A	D	D1	H	H1	L	L1	Travel S	SW	Clamping force kN	Tightening torque max. Nm
04431-10-060	A	-	5,9	10	M6	5	9	5	6,8	1,8	4	2,2	7,4
04431-10-080	A	-	7,1	12	M8	6	12	6	8,2	2,2	5	4,7	18
04431-10-100	A	-	8,3	14	M10	7	15	7	9,5	2,5	6	7,9	35
04431-10-120	A	-	9,5	16	M12	8	18	8	10,9	2,9	8	14	60