

Item description/product images



Description

Material:

Centring sleeve low carbon steel 1.7139.

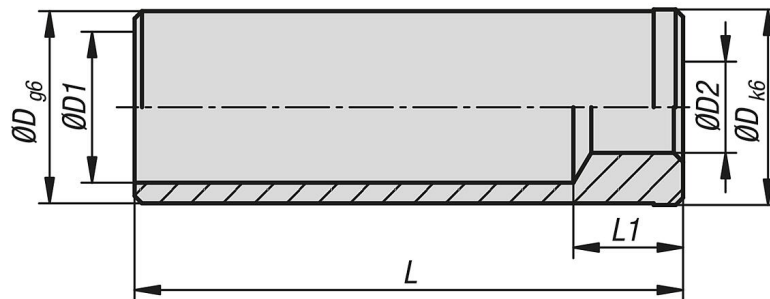
Version:

case-hardened.

Note:

The steel centring sleeves are components that can be used in tool and die making. They are used to ensure exact alignment and centring of tools, dies or components. These sleeves are particularly important for achieving high quality and precision in manufacturing.

Drawings



Overview of items

Order No.	D	D1	D2	L	L1
03152-20-14020	14	11	M8	20	8
03152-20-14030	14	11	M8	30	8
03152-20-14040	14	11	M8	40	8
03152-20-14050	14	11	M8	50	8
03152-20-14060	14	11	M8	60	8
03152-20-14070	14	11	M8	70	8
03152-20-14080	14	11	M8	80	8
03152-20-14100	14	11	M8	100	8
03152-20-20030	20	16	M12	30	12
03152-20-20040	20	16	M12	40	12
03152-20-20050	20	16	M12	50	12
03152-20-20060	20	16	M12	60	12
03152-20-20070	20	16	M12	70	12
03152-20-20080	20	16	M12	80	12
03152-20-20100	20	16	M12	100	12
03152-20-20120	20	16	M12	120	12
03152-20-20140	20	16	M12	140	12
03152-20-20160	20	16	M12	160	12
03152-20-26030	26	21	M12	30	12
03152-20-26040	26	21	M12	40	12
03152-20-26050	26	21	M12	50	12
03152-20-26060	26	21	M12	60	12
03152-20-26070	26	21	M12	70	12
03152-20-26080	26	21	M12	80	12
03152-20-26100	26	21	M12	100	12
03152-20-26120	26	21	M12	120	12
03152-20-26140	26	21	M12	140	12
03152-20-26160	26	21	M12	160	12
03152-20-26180	26	21	M12	180	12

Overview of items

Order No.	D	D1	D2	L	L1
03152-20-30040	30	25	M12	40	12
03152-20-30050	30	25	M12	50	12
03152-20-30060	30	25	M12	60	12
03152-20-30080	30	25	M12	80	12
03152-20-30100	30	25	M12	100	12
03152-20-30120	30	25	M12	120	12
03152-20-30140	30	25	M12	140	12
03152-20-30160	30	25	M12	160	12
03152-20-30180	30	25	M12	180	12
03152-20-30200	30	25	M12	200	12
03152-20-30220	30	25	M12	220	12
03152-20-30240	30	25	M12	240	12
03152-20-42040	42	33	M12	40	12
03152-20-42060	42	33	M12	60	12
03152-20-42080	42	33	M12	80	12
03152-20-42100	42	33	M12	100	12
03152-20-42120	42	33	M12	120	12
03152-20-42140	42	33	M12	140	12
03152-20-42160	42	33	M12	160	12
03152-20-42180	42	33	M12	180	12
03152-20-42200	42	33	M12	200	12
03152-20-42220	42	33	M12	220	12
03152-20-42240	42	33	M12	240	12
03152-20-42260	42	33	M12	260	12
03152-20-42280	42	33	M12	280	12
03152-20-42300	42	33	M12	300	12
03152-20-54060	54	43	M12	60	12
03152-20-54080	54	43	M12	80	12
03152-20-54100	54	43	M12	100	12
03152-20-54120	54	43	M12	120	12
03152-20-54140	54	43	M12	140	12
03152-20-54160	54	43	M12	160	12
03152-20-54200	54	43	M12	200	12
03152-20-54240	54	43	M12	240	12
03152-20-54280	54	43	M12	280	12
03152-20-54320	54	43	M12	320	12