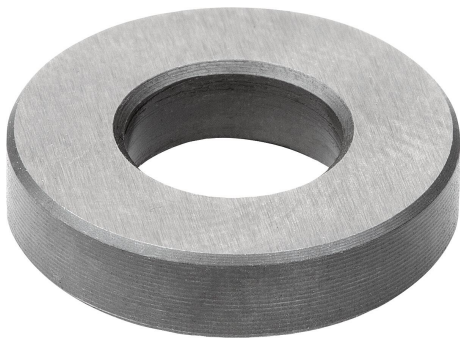


Item description/product images



Description

Material:

Washers low carbon steel 1.7139.

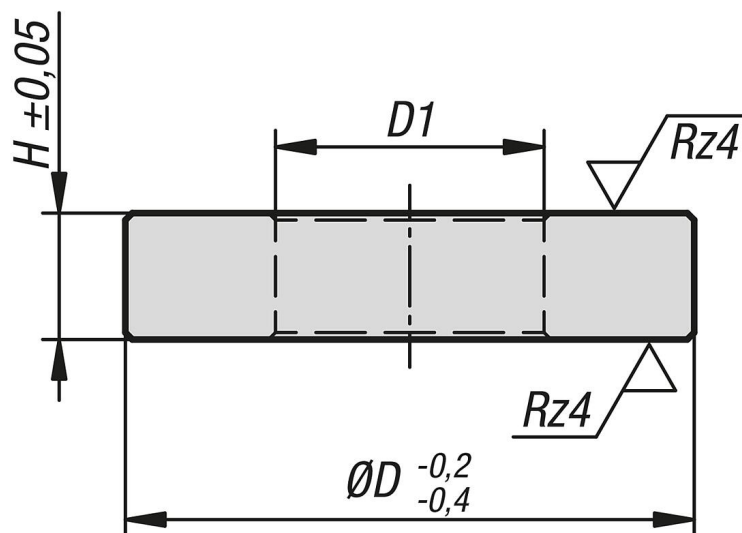
Version:

case-hardened.

Note:

The washers for guide tubes can be used in tool and die making. The washers are used to optimise the functionality, stability and precision of guide tubes, tools or dies.

Drawings



Overview of items

Order No.	D	D1	H
07375-12-143	14	6,2	3
07375-12-184	18	8,5	4
07375-12-245	24	10,5	5
07375-12-306	30	13	6
07375-12-408	40	17	8