

Technical Information for heavy-duty swing clamps with extended clamping travel

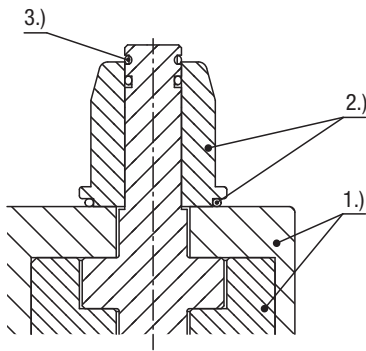
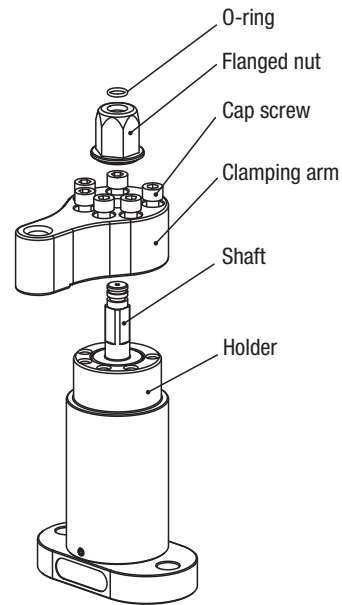
Installing and removing the clamping arm:

To install a clamping arm, carry out the following steps:

1. Mount the clamping arm on the holder using the 6 cap screws.
Tighten the screws to 18 Nm.
2. Fit the large O-ring to the underside of the flange nut and slide the flange nut over the shaft.
3. Fit the small O-ring into the groove on the top end of the shaft.

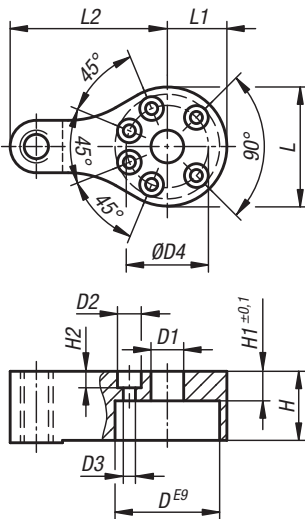
To remove, carry out the above steps in reverse.

Begin with step 3: Remove the small O-ring, Step 2...etc.



Customer-specific clamping arm

A customised clamping arm should be fabricated according to the dimensions given below.



	D	D1	D2	D3	D4	H	H1	H2	L	L1	L2
04364-05	43	13	10,5	6,5	34,5	29	9	6,2	50	25	66

Application:

