

## Item description/product images



## Description

**Material:**

Body QT steel.  
Tension lever QT steel.

**Version:**

Body black oxidised.  
Clamping face ground.

**Note:**

Tighten the setscrew to prevent the side clamp sliding back during the clamping process. (Form A)

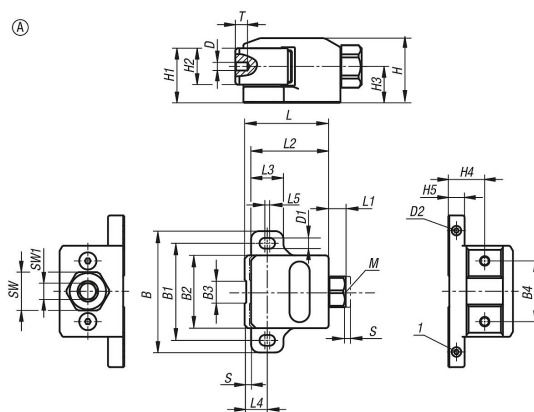
**Advantages:**

- High clamping force
- Ground clamping face
- Pull-down force prevents the workpiece lifting

**Drawing reference:**

- 1) Setscrew
- 2) Cap screw
- 3) Grub screw
- 4) Loosened position
- 5) Clamping travel
- 6) Clamping start position
- 7) Clamped position

## Drawings



## Overview of items

Order No.	Form	B	B1	B2	B3	B4	D	D1	D2	H	H1	H2	H3	H4	H5
04579-1400	A	100	80	60	20	40	M5	8,6	M5x8	40	33	22	22	22	10
04579-0900	A	75	60	45	15	30	M4	6,6	M4x6	32	27	18	18	18	8

Order No.	Form	L	L1	L2	L3	L4	L5	SW	SW1	T	Travel S	Clamping force kN	Tightening torque max. Nm
04579-1400	A	69	13	63	26	19	4	24	10	8	4	14	50
04579-0900	A	52	10	48	20	14	3	19	8	6	3	9	25

Overview of items

---