

Item description/product images

**Description****Material:**

Aluminium.

Version:

hard-coated.

Note:

3 cap screws together with matching washers are supplied.

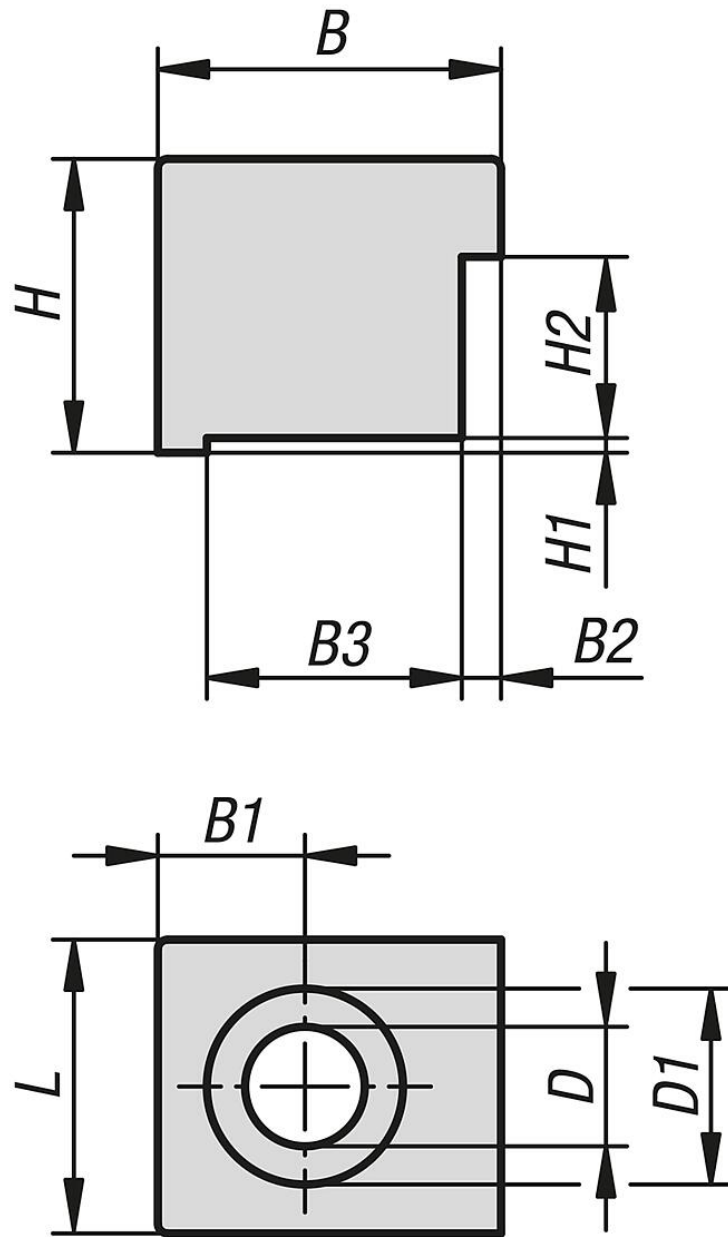
Application:

The claw clamps are screwed into a suitable baseplate with tapped holes and positioned. When used in conjunction with T-slot nuts, they can be mounted on machine tables.

Supplied with:

M8x30, M10x30 and M12x30 cap screws and matching washers.

Drawings



Overview of items

Order No.	B	B1	B2	B3	D	D1	H	H1	H2	L	suitable for system width
34000-10-05012	35	15	4	26	12,2	20	30	1,5	18,5	30	50