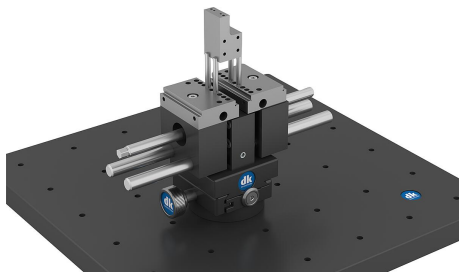
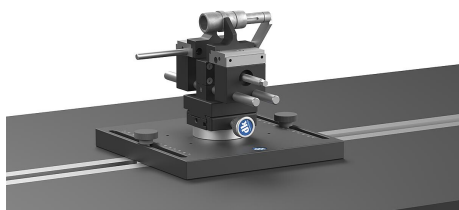
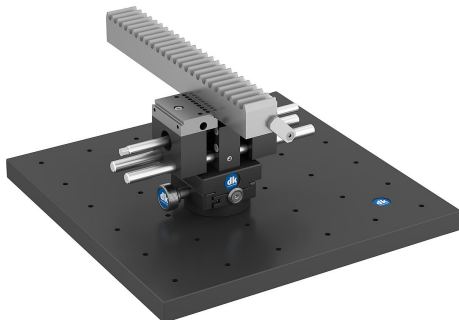
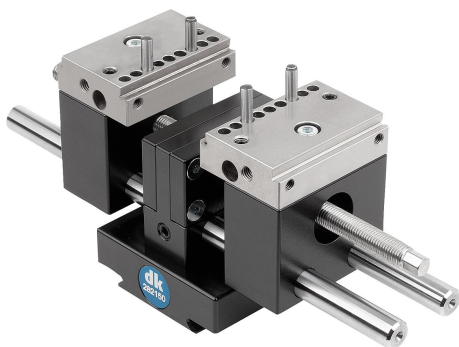


## Item description/product images



## Description

**Material:**

Body aluminium.  
Jaws steel.

**Version:**

Body hard-coated.  
Jaws surface-hardened and precision-ground.

**Note:**

The precision centric vice is a flexible solution for positioning and securing workpieces quickly and easily for measurement on measuring machines. Clamping is carried out via the offset jaws or pins that can be inserted into the jaws. This also enables workpieces with internal bores to be clamped.

The precision centric vice can be connected to all (basic) quick-action clamps to form a quick-change system. This enables the centric vice to be mounted quickly and effectively on various quick-release holders.

**Supplied with:**

Adjustable length stop, 4 DIN 6325 4x20 cap screws and operating tools.

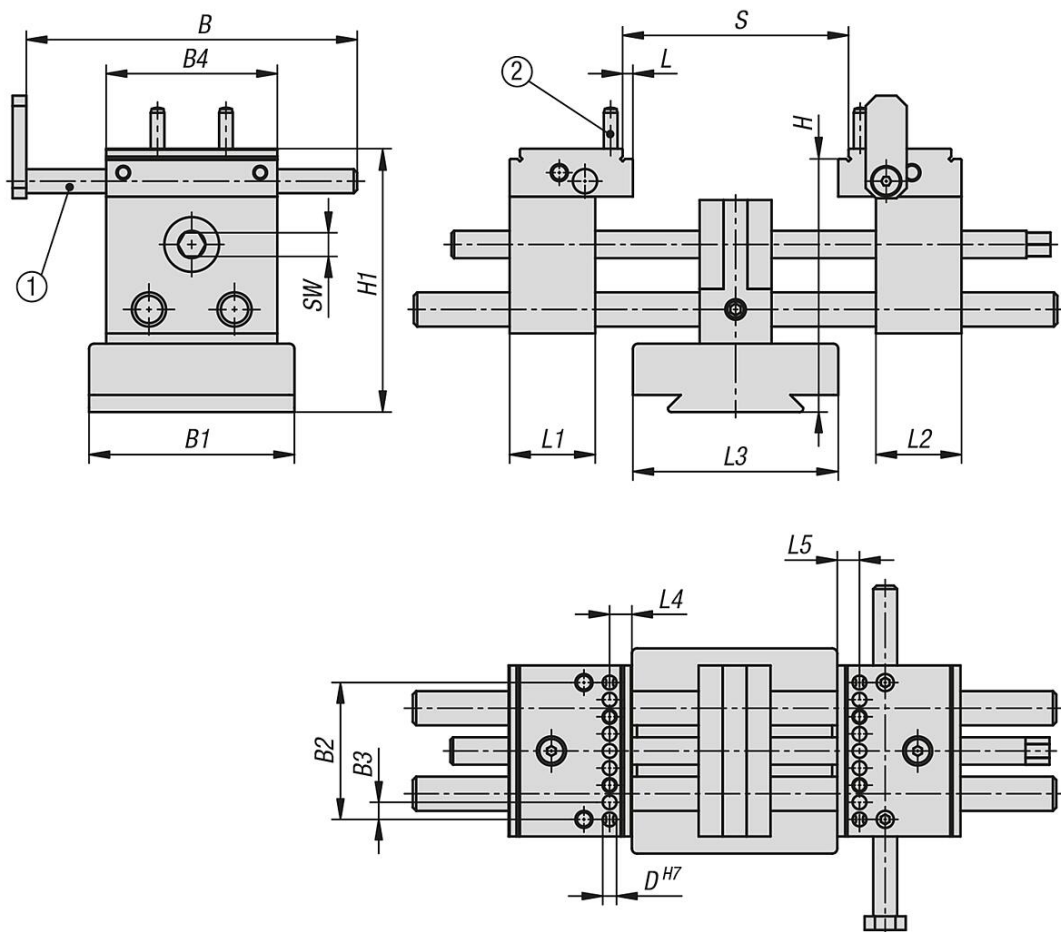
**Accessory:**

Accessories 33225.  
Baseplates 34031.  
Positioning stage 34031-05.  
Basic quick-action clamp 33227-05.  
Basic quick-action clamp 34006.  
Basic quick-action clamp 34021.  
Cross table 34031-10.  
Quick-action clamp with angle element 33227-10.  
Rotatable quick-action clamp with angle element 34007.  
Rotatable quick-action clamp 34007-02.

**Drawing reference:**

- 1) adjustable length stop
- 2) parallel pin

Drawings



Overview of items

Precision centric vice

Order No.	B	B1	B2	B3	B4	D	H	H1	Travel S	L	L1	L2	L3	L4	L5	SW
34010-500351	150	60	40	5	50	4,05	74	77	0-120	3	25	25	60	6,5	6,5	5,9