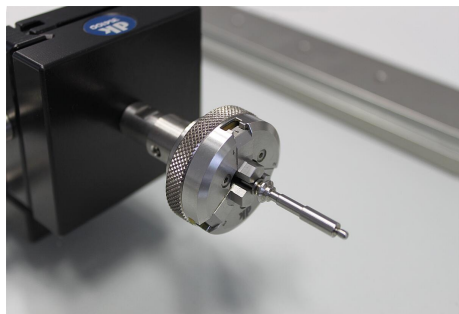
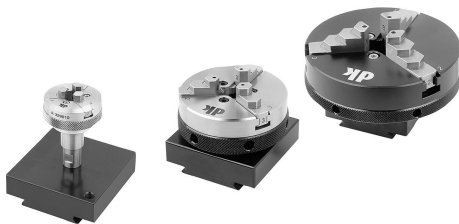


## Item description/product images

**Description****Material:**

Body and jaws steel.  
From Ø100 body aluminium, jaws steel.  
Quick-release mount aluminium.

**Version:**

Body bright, jaws hardened, bright.  
From Ø100 body hard anodised, jaws hardened, bright.  
Quick-release mount hard coated.

**Note:**

These chucks have been specifically designed to meet requirements for a low holding force with high precision. For internal and external clamping of round workpieces. The workpiece is clamped by simply rotating the clamping ring by hand or using the clamping lever supplied. The hardened jaws are stepped and are reversible. Each jaw is marked with an ID number at each end for reversing. The number on the jaw must match the number on the body next to the jaw slot.

Chuck size D=34 supplied without operating tools.

Chuck size D=50 supplied with operating tools and Ø 2 mm pins, 3 each 12 and 18 mm long.

Chuck size D=65 supplied with operating tools and Ø 2 mm pins, 3 each 12 and 18 mm long.

Chuck size D=100 supplied with operating tools and Ø 3 mm pins, 3 each 12, 18 and 24 mm long.

Chuck size D=160 supplied with operating tools and Ø 4 mm pins, 3 each 18 and 24 mm long.

The pins can be inserted into the top of the jaws and are used for elevated clamping of small parts. The pins are removable.

Concentricity < 0.03 mm

Circular runout < 0.01 mm

Repeat clamping accuracy < 0.01 mm

The three-jaw chucks can be connected to all (basic) quick-action clamps to form a quick-change system. This enables the three-jaw chucks to be mounted quickly and effectively on various quick-release holders.

**Accessory:**

Baseplates 34031.

Positioning stage 34031-05.

Basic quick-action clamp 33227-05.

Basic quick-action clamp 34006.

Basic quick-action clamp 34021.

Cross table 34031-10.

Quick-action clamp with angle element 33227-10.

Rotatable quick-action clamp with angle element 34007.

Rotatable quick-action clamp 34007-02.

**Drawing reference:**

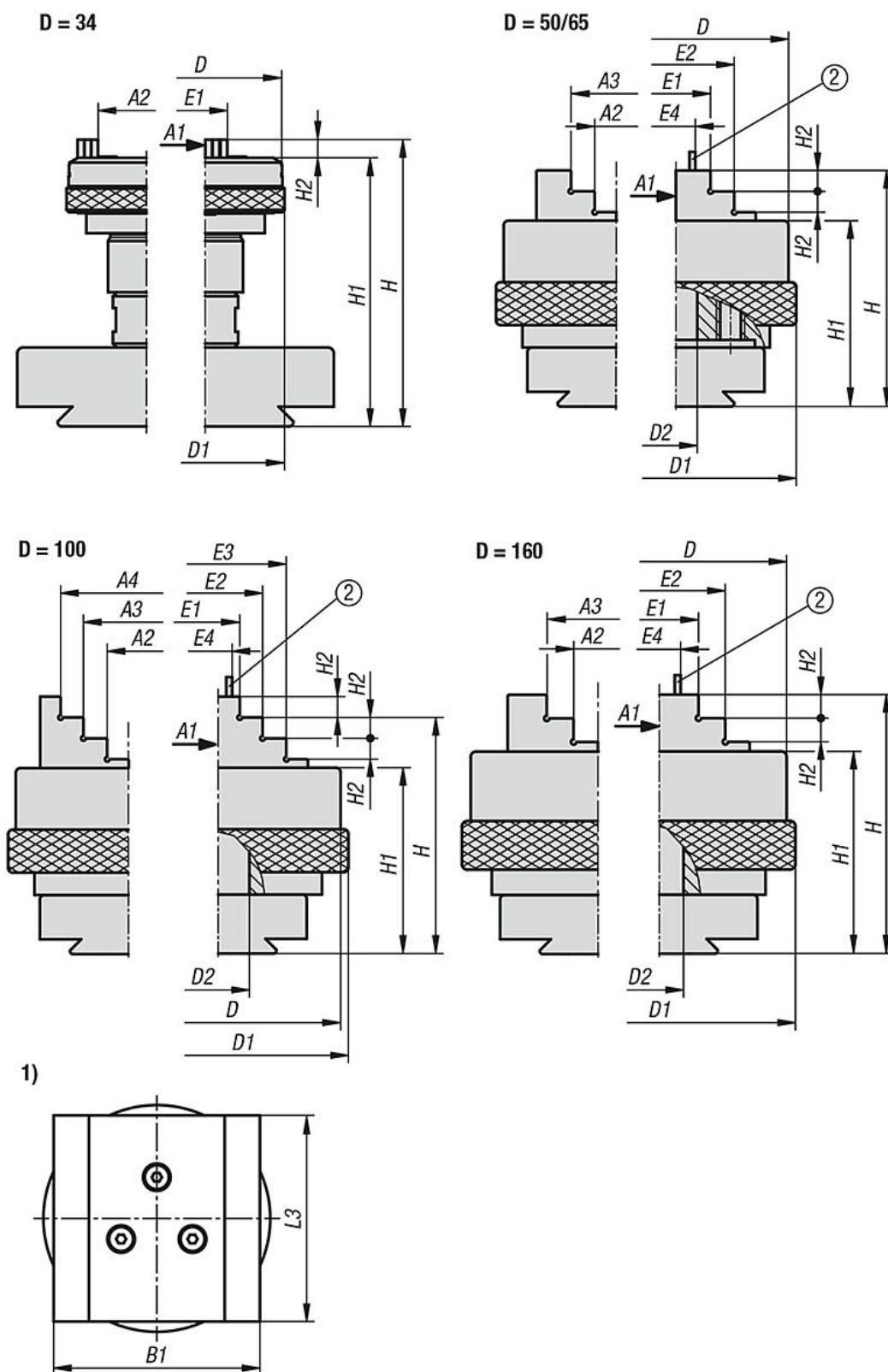
1) Dimension for quick-release mount

2) Pins

Item description/product images



Drawings



Overview of items

Precision three-jaw manual chuck with adapter

## Overview of items

Order No.	Main material	Surface finish body	A1	A2	A3	A4	B1	D	D1	D2	E1	E2	E3	E4	H	H1	H2	L3
34011-034	steel	bright	1-14	20-32	-	-	60	34	35	-	11-23	-	-	-	72,7	68,1	4,3	60
34011-050	steel	bright	1-18	18-36	36-54	-	60	50	52,5	11	17-35	35-53	-	7,8	55,8	46,3	4	60
34011-065	steel	bright	1-30	18-48	36-66	-	60	65	66	13	17-47	35-65	-	7,8	55,8	46,3	4	60
34011-100	aluminium	hard anodised	1-40	28-66	48-84	68-102	60	100	106	18,2	20-60	40-80	60-100	9	63,2	53,2	4,5	60
34011-160	aluminium	hard anodised	2,5-70	42-120	100-160	-	60	160	164	35	38-100	90-160	-	20	98,5	72,8	10	60