

## Item description/product images



## Description

**Material:**

Carbon steel.

**Version:**

Body black oxidised.

Contact face tempered and ground.

**Note:**

The repeat accuracy is  $\pm 0.3$  mm.

To remove swarf and dust, remove the two cover caps (2) and blow them out with compressed air from above.

**Type of operation:**

Actuated using a hammer driver with adjustable torque or manually using a clamping key.

**Advantages:**

Automation-compatible

High clamping forces

Rapid clamping

**Supplied with:**

Including positioning bush.

**Accessory:**

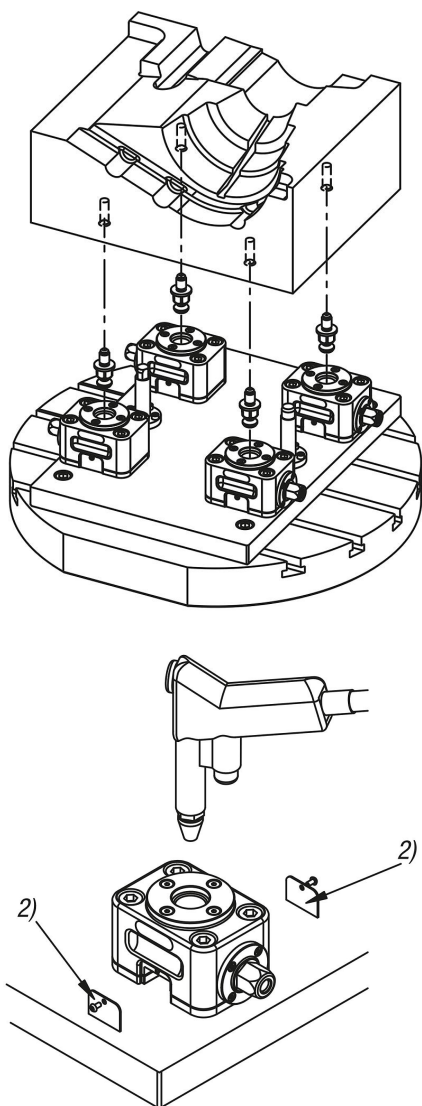
04401-05 Clamping screw for automation capable pull clamps

04401-20 Extension unit.

**Drawing reference:**

1) Positioning bushes

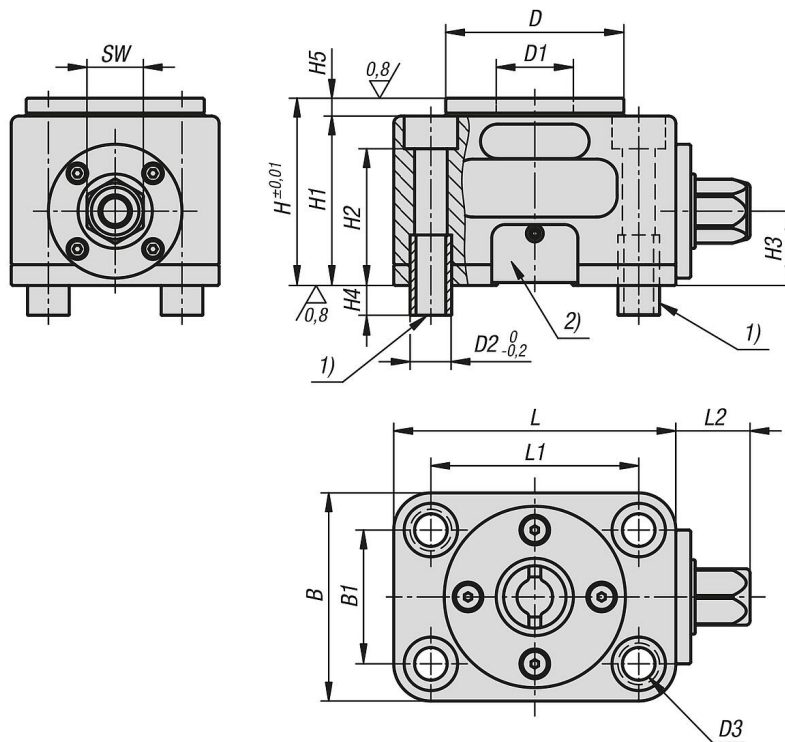
2) cover cap



Item description/product images



Drawings



Overview of items

Order No.	B	B1	D	D1	D2	D3 for screw to DIN 912	H	H1	H2	H3	H4	H5	L	L1	L2	SW	Tightening torque max. Nm	Clamping force kN
04401-12070095	70	45	60	26	14	M10	63	57	46	25	10	6	95	70	25	19	40	12

