

Item description/product images



Description

Material:

Hinge steel.
Spacer washer brass.
Hinge pin steel or brass.

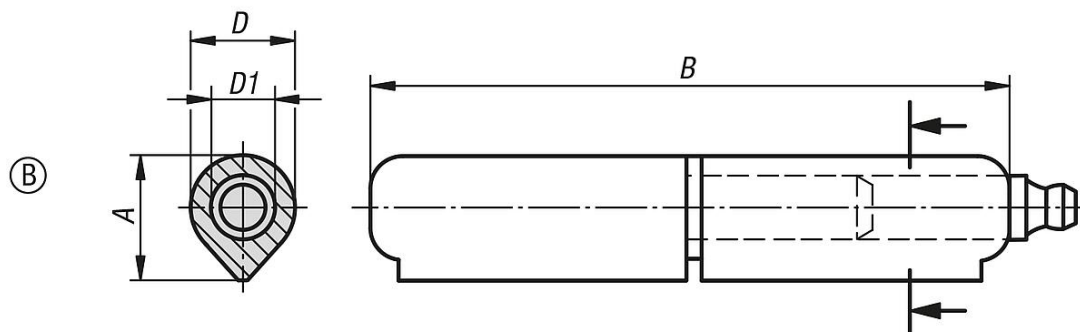
Version:

Grease nipple DIN 71412-D, electro zinc-plated steel.
Steel parts, bright.

Note:

The hinges are made of weldable profile steel.
The pin is fixed into the lower part of the hinge.
The differing steel qualities of the weld and the beam onto which the hinge is welded must be at least equal to or better than:
S235 JR+AR acc. to EN 10025-2:2004-10
DIN 8563 part 3 or Fe E 235 acc. to SIA 161

Drawings



Overview of items

Order No.	Form	Component material	A	B	D	D1
27885-113080012	B	steel	16	80	13	8
27885-116100012	B	steel	20	100	16	10
27885-116120012	B	steel	20	120	16	10
27885-118135012	B	steel	22,5	135	18	12
27885-120150012	B	steel	25,5	150	20	13
27885-120180012	B	steel	25	180	20	14
27885-123200012	B	steel	29	200	23	16

