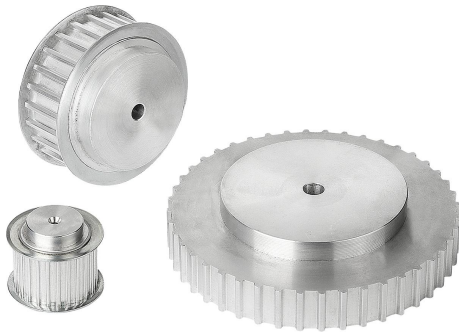


Item description/product images



Description

Material:

Aluminium.
Rim flanges, steel.

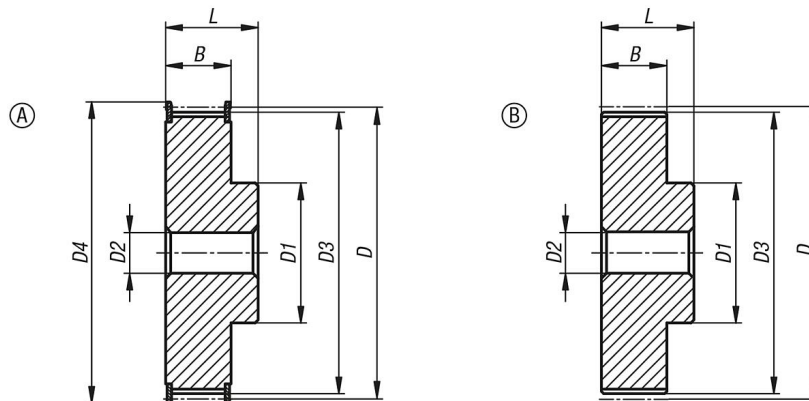
Version:

Aluminium bright.
Rim flanges, electro zinc-plated.

Note:

Standard AT-profile with metric pitch (trapezoidal toothing). At least one toothed belt pulley must have a rim flange. The toothed belt pulleys have a centre bore or are pre-drilled (this can vary due to production methods). For this reason, the dimension D2 max. given in the table is the maximum diameter of the bore that the toothed belt pulleys are supplied with. This pilot hole/centre bore can be customised with a reamed hole, reamed hole with keyway or a tapped hole by the customer. Alternatively, bushes can be fitted by the customer to reduce the diameter. To reduce weight, the toothed belt pulleys may have a recess on one face.

Drawings



Overview of items

Order No.	Profile	belt width	Form	No. of teeth	D	D1	D2 max.	D3	D4	B	L
22003-051012	AT5	10	A	12	19,01	10	6	17,85	23	15	21
22003-051014	AT5	10	A	14	22,29	13	8	21,05	25	15	21
22003-051015	AT5	10	A	15	23,88	16	10	22,65	28	15	21
22003-051016	AT5	10	A	16	25,47	18	11	24,2	32	15	21
22003-051018	AT5	10	A	18	28,65	20	12	27,4	32	15	21
22003-051019	AT5	10	A	19	30,25	22	12	29	36	15	21
22003-051020	AT5	10	A	20	31,83	23	14	30,6	36	15	21
22003-051022	AT5	10	A	22	35,12	24	15	33,85	38	15	21
22003-051024	AT5	10	A	24	38,21	26	15	37	42	15	21
22003-051025	AT5	10	A	25	39,8	26	15	38,6	44	15	21
22003-051026	AT5	10	A	26	41,47	26	16	40,2	44	15	21
22003-051027	AT5	10	A	27	42,98	30	18	41,8	48	15	21
22003-051028	AT5	10	A	28	44,62	32	18	43,35	48	15	21
22003-051030	AT5	10	A	30	47,76	34	18	46,55	51	15	21
22003-051032	AT5	10	A	32	50,94	36	22	49,7	54	15	21
22003-051036	AT5	10	A	36	57,31	38	22	56,05	63	15	21
22003-051040	AT5	10	A	40	63,66	40	23	62,45	66	15	21
22003-051042	AT5	10	A	42	66,87	40	24	65,6	71	15	21
22003-051044	AT5	10	B	44	70,07	45	26	68,8	-	15	21

Overview of items

Order No.	Profile	belt width	Form	No. of teeth	D	D1	D2 max.	D3	D4	B	L
22003-051048	AT5	10	B	48	76,42	50	28	75,15	-	15	21
22003-051060	AT5	10	B	60	95,52	65	35	94,25	-	15	21
22003-051612	AT5	16	A	12	19,01	10	6	17,85	23	21	27
22003-051614	AT5	16	A	14	22,29	13	8	21,05	25	21	27
22003-051615	AT5	16	A	15	23,88	16	10	22,65	28	21	27
22003-051616	AT5	16	A	16	25,47	18	11	24,2	32	21	27
22003-051618	AT5	16	A	18	28,65	20	12	27,4	32	21	27
22003-051619	AT5	16	A	19	30,25	22	12	29	36	21	27
22003-051620	AT5	16	A	20	31,83	23	14	30,6	36	21	27
22003-051622	AT5	16	A	22	35,12	24	15	33,85	38	21	27
22003-051624	AT5	16	A	24	38,21	26	15	37	42	21	27
22003-051625	AT5	16	A	25	39,8	26	15	38,6	44	21	27
22003-051626	AT5	16	A	26	41,47	26	16	40,2	44	21	27
22003-051627	AT5	16	A	27	42,98	30	18	41,8	48	21	27
22003-051628	AT5	16	A	28	44,62	32	18	43,35	48	21	27
22003-051630	AT5	16	A	30	47,76	34	18	46,55	51	21	27
22003-051632	AT5	16	A	32	50,94	36	22	49,7	54	21	27
22003-051636	AT5	16	A	36	57,31	38	22	56,05	63	21	27
22003-051640	AT5	16	A	40	63,66	40	23	62,45	66	21	27
22003-051642	AT5	16	A	42	66,87	40	24	65,6	71	21	27
22003-051644	AT5	16	B	44	70,07	45	26	68,8	-	21	27
22003-051648	AT5	16	B	48	76,42	50	28	75,15	-	21	27
22003-051660	AT5	16	B	60	95,52	65	35	94,25	-	21	27
22003-052512	AT5	25	A	12	19,01	10	6	17,85	23	30	36
22003-052514	AT5	25	A	14	22,29	13	8	21,05	25	30	36
22003-052515	AT5	25	A	15	23,88	16	10	22,65	28	30	36
22003-052516	AT5	25	A	16	25,47	18	11	24,2	32	30	36
22003-052518	AT5	25	A	18	28,65	20	12	27,4	32	30	36
22003-052519	AT5	25	A	19	30,25	22	12	29	36	30	36
22003-052520	AT5	25	A	20	31,83	23	14	30,6	36	30	36
22003-052522	AT5	25	A	22	35,12	24	15	33,85	38	30	36
22003-052524	AT5	25	A	24	38,21	26	15	37	42	30	36
22003-052525	AT5	25	A	25	39,8	26	15	38,6	44	30	36
22003-052526	AT5	25	A	26	41,47	26	16	40,2	44	30	36
22003-052527	AT5	25	A	27	42,98	30	18	41,8	48	30	36
22003-052528	AT5	25	A	28	44,62	32	18	43,35	48	30	36
22003-052530	AT5	25	A	30	47,76	34	18	46,55	51	30	36
22003-052532	AT5	25	A	32	50,94	36	22	49,7	54	30	36
22003-052536	AT5	25	A	36	57,31	38	22	56,05	63	30	36
22003-052540	AT5	25	A	40	63,66	40	23	62,45	66	30	36
22003-052542	AT5	25	A	42	66,87	40	24	65,6	71	30	36
22003-052544	AT5	25	B	44	70,07	45	26	68,8	-	30	36
22003-052548	AT5	25	B	48	76,42	50	28	75,15	-	30	36
22003-052560	AT5	25	B	60	95,52	65	35	94,25	-	30	36