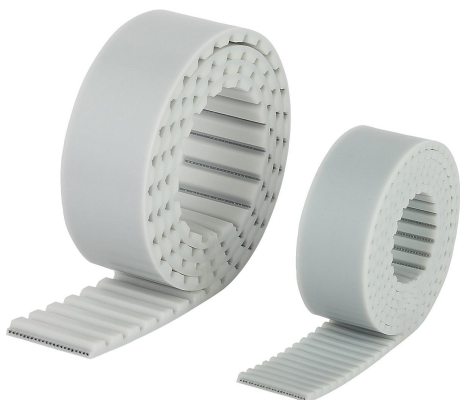


Item description/product images



Description

Material:

Polyurethane (PU) with steel cord reinforcement.

Note:

Toothed belt with trapezoidal profile and reinforced steel cord (compared to T-Series). Optimised tooth profile for more uniform force distribution and lower tooth deformation under load. High-performance steel cord reinforcement for high breaking strength and low belt extension. Reduced polygon effect for quieter belt operation. Especially well-suited for linear drives and low power transmission where exact axial and angular positioning are required. Polyurethane belts may be welded. The power transmission rating of welded belts drops by about 50%.

Width tolerance: ± 0.5 mm

Thickness tolerance: ± 0.2 mm

On request:

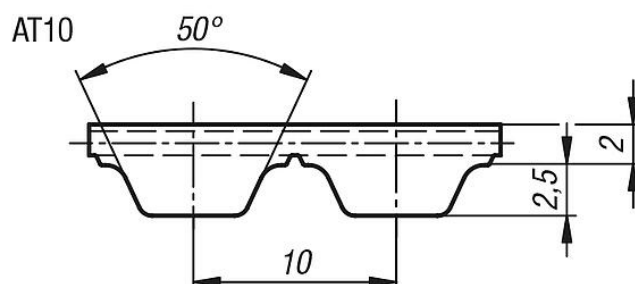
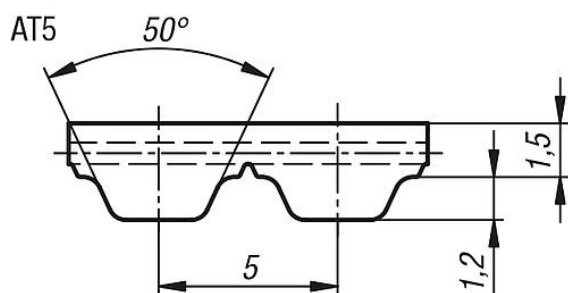
Other lengths.

AT5 pitch in 5 mm length increases.

AT10 pitch in 10 mm length increases.

Maximum belt length 100 metres.

Drawings



Overview of items

Order No.	Profile	belt width	Tension max. N	Length	matching clamp plate
22059-0510X0500	AT5	10	640	500	22012-05102
22059-0510X1000	AT5	10	640	1000	22012-05102
22059-0510X1500	AT5	10	640	1500	22012-05102
22059-0510X2000	AT5	10	640	2000	22012-05102
22059-0510X2500	AT5	10	640	2500	22012-05102
22059-0510X3000	AT5	10	640	3000	22012-05102
22059-0510X3500	AT5	10	640	3500	22012-05102
22059-0510X4000	AT5	10	640	4000	22012-05102
22059-0510X5000	AT5	10	640	5000	22012-05102
22059-0516X0500	AT5	16	1120	500	22012-05162
22059-0516X1000	AT5	16	1120	1000	22012-05162
22059-0516X1500	AT5	16	1120	1500	22012-05162
22059-0516X2000	AT5	16	1120	2000	22012-05162
22059-0516X2500	AT5	16	1120	2500	22012-05162
22059-0516X3000	AT5	16	1120	3000	22012-05162
22059-0516X3500	AT5	16	1120	3500	22012-05162
22059-0516X4000	AT5	16	1120	4000	22012-05162
22059-0516X5000	AT5	16	1120	5000	22012-05162
22059-0525X0500	AT5	25	1840	500	22012-05252

Overview of items

Order No.	Profile	belt width	Tension max. N	Length	matching clamp plate
22059-0525X1000	AT5	25	1840	1000	22012-05252
22059-0525X1500	AT5	25	1840	1500	22012-05252
22059-0525X2000	AT5	25	1840	2000	22012-05252
22059-0525X2500	AT5	25	1840	2500	22012-05252
22059-0525X3000	AT5	25	1840	3000	22012-05252
22059-0525X3500	AT5	25	1840	3500	22012-05252
22059-0525X4000	AT5	25	1840	4000	22012-05252
22059-0525X5000	AT5	25	1840	5000	22012-05252
22059-1016X0500	AT10	16	2450	500	22012-10162
22059-1016X1000	AT10	16	2450	1000	22012-10162
22059-1016X1500	AT10	16	2450	1500	22012-10162
22059-1016X2000	AT10	16	2450	2000	22012-10162
22059-1016X2500	AT10	16	2450	2500	22012-10162
22059-1016X3000	AT10	16	2450	3000	22012-10162
22059-1016X3500	AT10	16	2450	3500	22012-10162
22059-1016X4000	AT10	16	2450	4000	22012-10162
22059-1016X5000	AT10	16	2450	5000	22012-10162
22059-1025X0500	AT10	25	4170	500	22012-10252
22059-1025X1000	AT10	25	4170	1000	22012-10252
22059-1025X1500	AT10	25	4170	1500	22012-10252
22059-1025X2000	AT10	25	4170	2000	22012-10252
22059-1025X2500	AT10	25	4170	2500	22012-10252
22059-1025X3000	AT10	25	4170	3000	22012-10252
22059-1025X3500	AT10	25	4170	3500	22012-10252
22059-1025X4000	AT10	25	4170	4000	22012-10252
22059-1025X5000	AT10	25	4170	5000	22012-10252
22059-1032X0500	AT10	32	5390	500	22012-10322
22059-1032X1000	AT10	32	5390	1000	22012-10322
22059-1032X1500	AT10	32	5390	1500	22012-10322
22059-1032X2000	AT10	32	5390	2000	22012-10322
22059-1032X2500	AT10	32	5390	2500	22012-10322
22059-1032X3000	AT10	32	5390	3000	22012-10322
22059-1032X3500	AT10	32	5390	3500	22012-10322
22059-1032X4000	AT10	32	5390	4000	22012-10322
22059-1032X5000	AT10	32	5390	5000	22012-10322