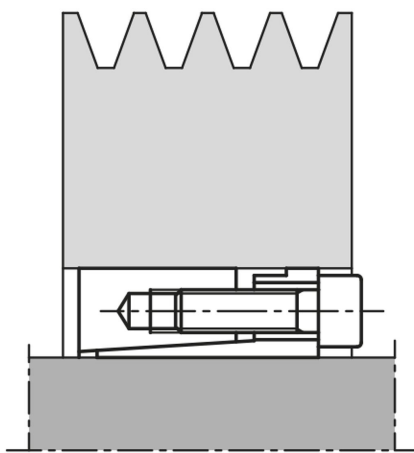


Item description/product images

**Description****Material:**

Steel.

Version:

Bright.

Note:

The keyless locking coupling can be fully recessed in a hub connection.

- for shaft diameters from 19 to 85 mm
- for high torques
- minimum axial offset possible
- self-centring

Assembly:

Lightly oil keyless locking coupling on the tapered faces and contact points of the shaft and hub. Do not use MoS2 or grease. Insert keyless locking coupling in the hub seat and slide onto shaft. Tighten screws crosswise in several increments to the defined tightening torque.

Dismantling: Remove all screws and screw into the extraction threads of the front flange. Tighten screws crosswise in several steps until the keyless locking coupling loosens.

Tolerances:**Shaft:**

Recommended tolerance h8.

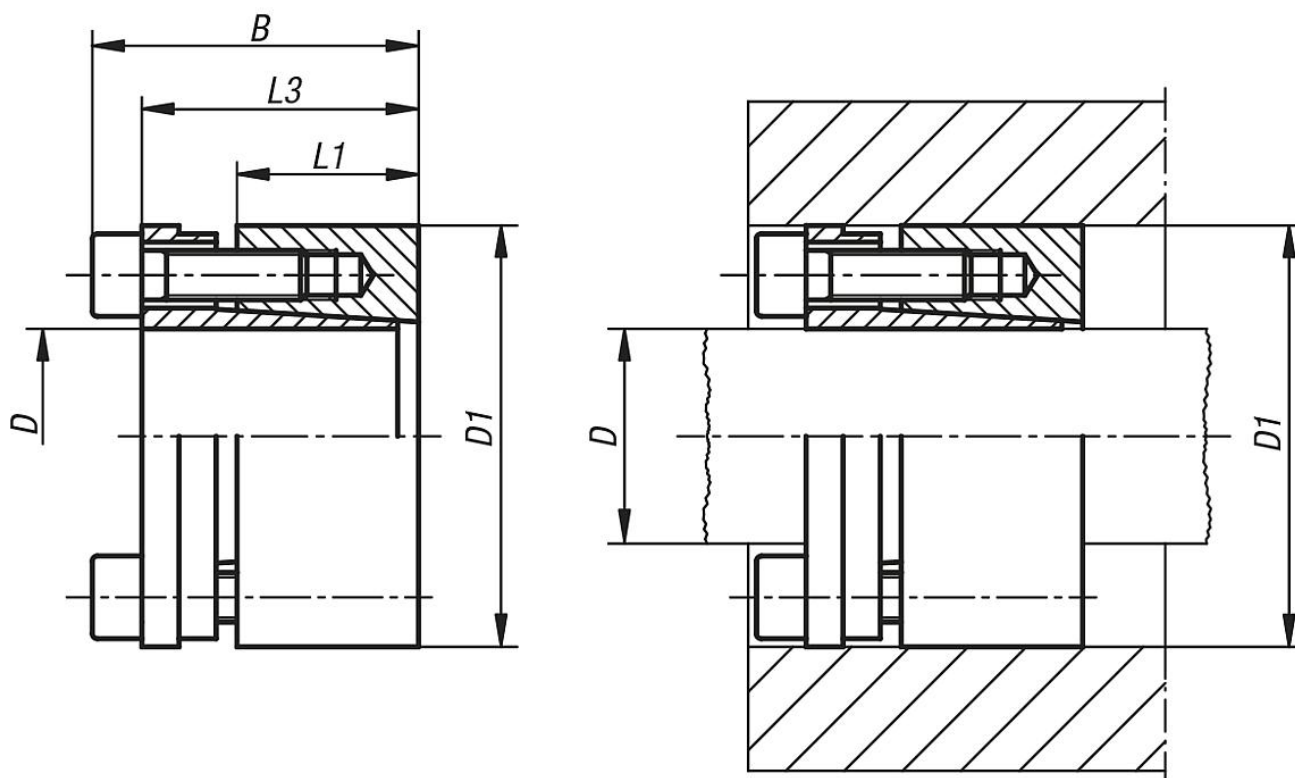
Surface quality $Rz \leq 16 \mu\text{m}$.

Hub:

Recommended tolerance H8.

Surface quality $Rz \leq 16 \mu\text{m}$.

Drawings



Overview of items

| Order No. | D | D1 | B | L1 | L3 | Max. torque M Nm with tightening torque MS | Max. axial force F kN with tightening torque MS | Surface pressure on shaft P N/mm ² | Surface pressure on hub P N/mm ² | No. of screws | Tightening torque MS Nm |
|-------------|----|-----|----|----|----|--|---|---|---|------------------|-------------------------------|
| 23351-1947 | 19 | 47 | 45 | 26 | 39 | 530 | 56 | 298 | 120 | 6 x M6 | 17 |
| 23351-2047 | 20 | 47 | 45 | 26 | 39 | 550 | 56 | 283 | 120 | 6 x M6 | 17 |
| 23351-2247 | 22 | 47 | 45 | 26 | 39 | 610 | 56 | 257 | 120 | 6 x M6 | 17 |
| 23351-2450 | 24 | 50 | 45 | 26 | 39 | 660 | 56 | 236 | 115 | 6 x M6 | 17 |
| 23351-2550 | 25 | 50 | 45 | 26 | 39 | 690 | 56 | 227 | 115 | 6 x M6 | 17 |
| 23351-2855 | 28 | 55 | 45 | 26 | 39 | 770 | 56 | 202 | 105 | 6 x M6 | 17 |
| 23351-3055 | 30 | 55 | 45 | 26 | 39 | 830 | 56 | 190 | 105 | 6 x M6 | 17 |
| 23351-3260 | 32 | 60 | 45 | 26 | 39 | 1180 | 74 | 235 | 125 | 8 x M6 | 17 |
| 23351-3560 | 35 | 60 | 45 | 26 | 39 | 1295 | 74 | 216 | 126 | 8 x M6 | 17 |
| 23351-3865 | 38 | 65 | 45 | 26 | 39 | 1400 | 74 | 200 | 116 | 8 x M6 | 17 |
| 23351-4065 | 40 | 65 | 45 | 26 | 39 | 1480 | 74 | 190 | 116 | 8 x M6 | 17 |
| 23351-4275 | 42 | 75 | 55 | 30 | 47 | 2120 | 101 | 212 | 120 | 6 x M8 | 41 |
| 23351-4575 | 45 | 75 | 55 | 30 | 47 | 2270 | 101 | 198 | 120 | 6 x M8 | 41 |
| 23351-4880 | 48 | 80 | 55 | 30 | 47 | 3230 | 135 | 250 | 150 | 8 x M8 | 41 |
| 23351-5080 | 50 | 80 | 55 | 30 | 47 | 3365 | 135 | 240 | 150 | 8 x M8 | 41 |
| 23351-5585 | 55 | 85 | 55 | 30 | 47 | 3700 | 135 | 216 | 140 | 8 x M8 | 41 |
| 23351-6090 | 60 | 90 | 55 | 30 | 47 | 4035 | 135 | 200 | 135 | 8 x M8 | 41 |
| 23351-6595 | 65 | 95 | 55 | 30 | 47 | 4370 | 135 | 183 | 125 | 8 x M8 | 41 |
| 23351-70110 | 70 | 110 | 67 | 40 | 62 | 7615 | 218 | 206 | 131 | 8 x M10 | 83 |
| 23351-75115 | 75 | 115 | 72 | 40 | 62 | 8160 | 218 | 192 | 126 | 8 x M10 | 83 |
| 23351-80120 | 80 | 120 | 72 | 40 | 62 | 8700 | 218 | 180 | 120 | 8 x M10 | 83 |
| 23351-85125 | 85 | 125 | 72 | 40 | 62 | 11560 | 272 | 212 | 145 | 10 x M10 | 83 |

