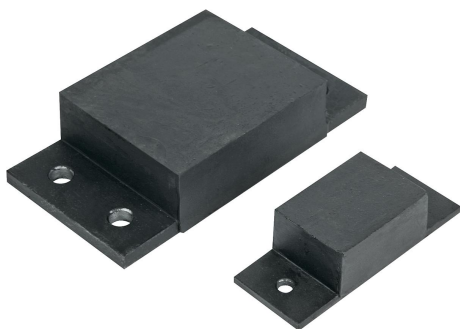


## Item description/product images



## Description

**Material:**

Steel.

Elastomer, natural rubber, medium hardness, Shore 57A.

**Version:**

Steel, painted black.

(26120-02501904557, 26120-05003507057 and 26120-10004512057 electro zinc-plated).

**Note:**

For absorbing large impact forces and supporting heavy weights.

The specified load data applies to static permanent loads with a rubber Shore hardness of 57A.

Due to the material composition, rubber buffers are contact-colouring, which can lead to abrasion marks and discolouration on e.g. floors or contact surfaces.

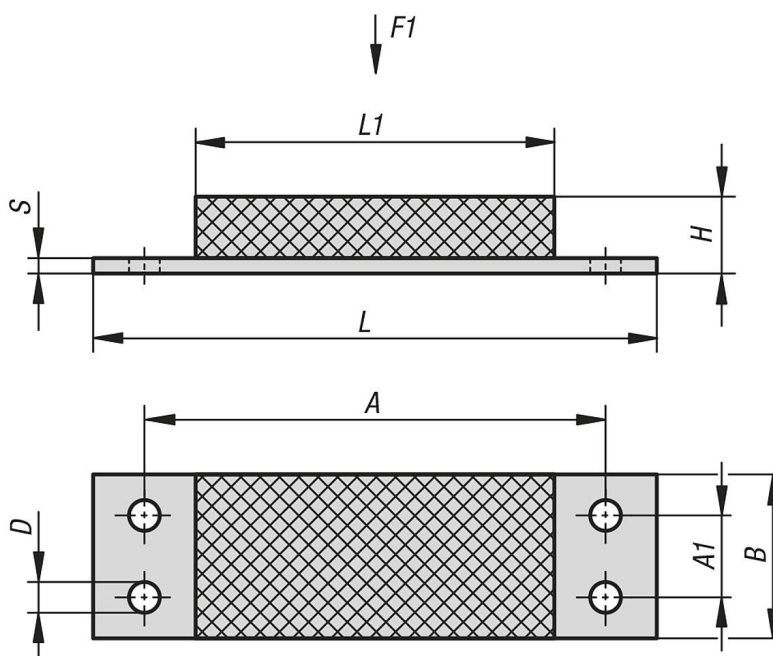
Rubber buffers made of light grey EPDM that are not contact-colouring are available on request.

\* Metal parts 30 mm wide.

**Temperature range:**

-30 °C to +80 °C

## Drawings



## Overview of items

Order No.	A	A1	B	D	H	L	L1	S	F1 N
26120-02501904557	68,6	-	25*	6,5	19	84	45	3	500
26120-05003507057	100	-	50	8,5	35	130	70	5	3100

## Overview of items

Order No.	A	A1	B	D	H	L	L1	S	F1 N
26120-05007007057	100	-	50	8,5	70	130	70	5	2500
26120-10004512057	160	50	100	13	45	200	120	10	14000
26120-10008012057	160	50	100	13	80	200	120	10	8500
26120-12004515057	200	60	120	15	45	250	150	10	18000
26120-15005020057	250	80	150	17	50	300	200	15	34000