

Item description/product images



Description

Material:

Thrust pad steel.
Snap ring spring steel.

Version:

Surface hardened and black oxidised.

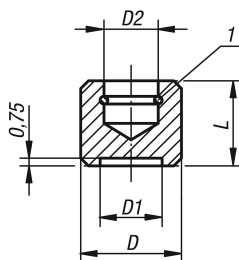
Note:

These thrust pads press lightly onto torque screws with ball thrust pins (07134) or grub screws with thrust pins (07120).
The ball end allows the thrust pad to adapt to the clamping surface.

Drawing reference:

1) snap ring

Drawings



Overview of items

Order No.	D	D1	D2	L	Suitable for
07138-10	10	5	4,5	8	07120-06, 07134-06
07138-12	12	6	6	9	07120-08, 07134-08
07138-14	14	8	8	11	07120-10, 07120-12, 07134-1