

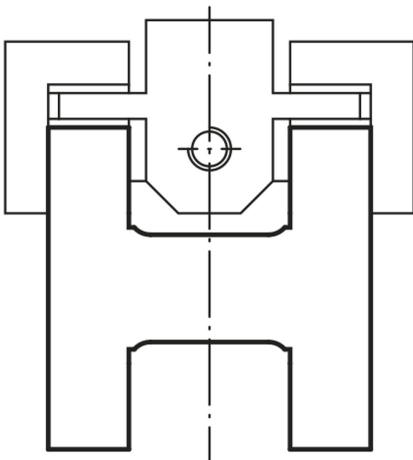
Item description/product images



Description

Material:

GJL 250 annealed or EN AW-7075.



Drawings

machined surfaces:

±0.25 mm

raw surfaces:

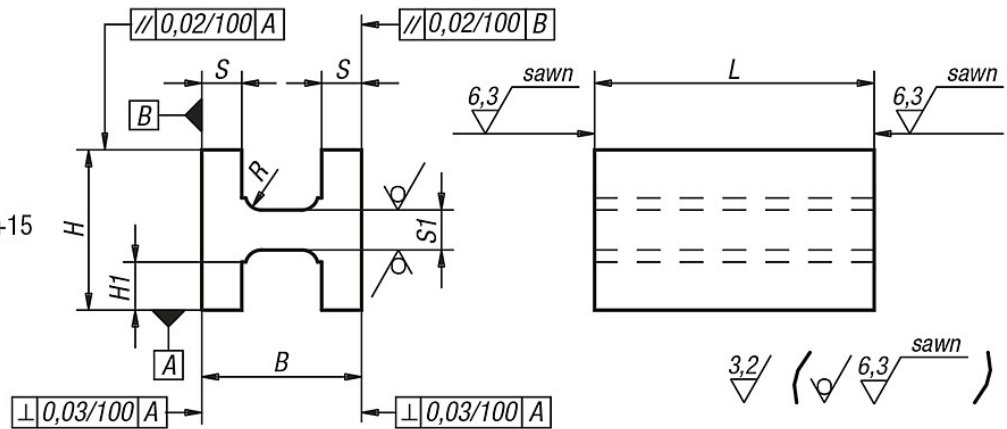
±2 mm

tolerances of lengths:

≤ 200 mm: +3/+10

from 201 mm to 590 mm: +8/+15

≥ 600 mm: +20/+50



Overview of items

Order No. grey cast iron	Order No. Aluminium	L = length	B	H	H1	S	S1	R
01560-03X	01560-203X	600	80	80	25	16	21	6
01560-04X	01560-204X	300/600	100	100	32	20	26	8
01560-05X	01560-205X	200/300/600	125	125	45	20	26	8

