

商品描述/产品说明

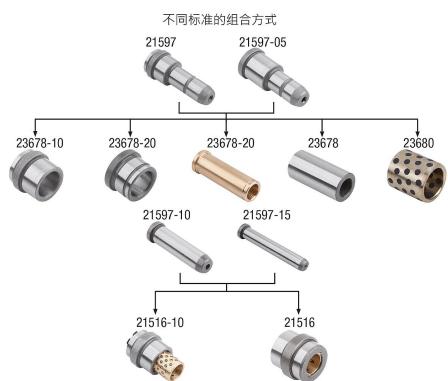


产品说明

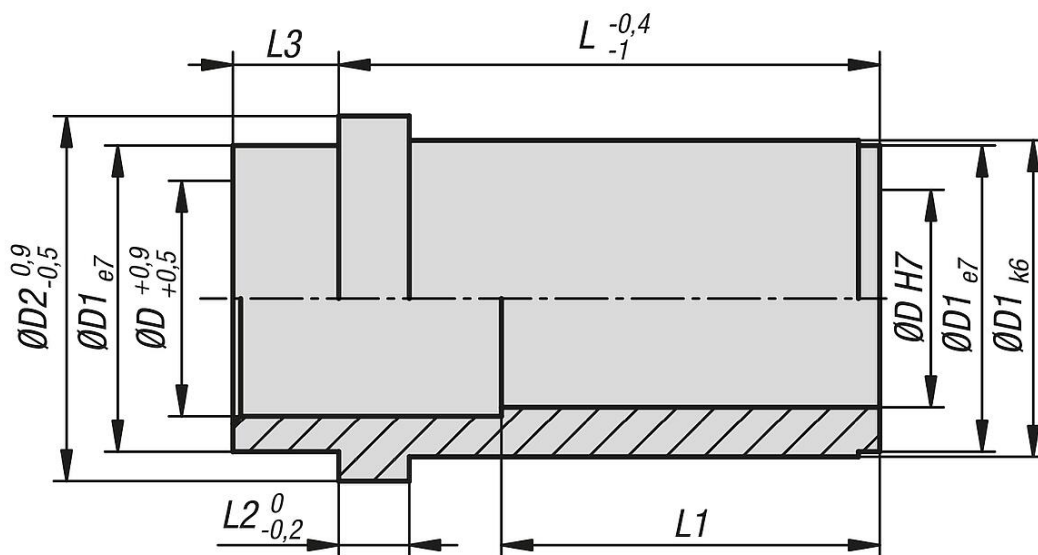
材料：  
渗碳钢制导向衬套 1.7139。

规格：  
经渗碳硬化处理。

提示：  
带定心轴环的钢制导向衬套是可用于工具和模具制造的部件。其用于确保工具、模具或其他移动部件的精确导向、校准和定位。



图纸



商品概述

订货号	D	D1	D2	L	L1	L2	L3
23678-10-09***	9	14	16	12	12	3	3
23678-10-09***	9	14	16	17	17	3	3
23678-10-09***	9	14	16	22	22	3	3
23678-10-09***	9	14	16	27	27	3	3
23678-10-09***	9	14	16	36/46/56/66	36	3	3

## 商品概述

订货号	D	D1	D2	L	L1	L2	L3
23678-10-10***	10	14	16	12	12	3	3
23678-10-10***	10	14	16	17	17	3	3
23678-10-10***	10	14	16	22	22	3	3
23678-10-10***	10	14	16	27	27	3	3
23678-10-10***	10	14	16	36/46/56/66	36	3	3
23678-10-14***	14	20	25	17	17	6	9
23678-10-14***	14	20	25	22	22	6	9
23678-10-14***	14	20	25	27	27	6	9
23678-10-14***	14	20	25	36	36	6	9
23678-10-14***	14	20	25	46/56/66/76/86/96/116	46	6	9
23678-10-15***	15	20	25	17	17	6	9
23678-10-15***	15	20	25	22	22	6	9
23678-10-15***	15	20	25	27	27	6	9
23678-10-15***	15	20	25	36	36	6	9
23678-10-15***	15	20	25	46/56/66/76/86/96/116	46	6	9
23678-10-18***	18	26	31	17	17	6	9
23678-10-18***	18	26	31	22	22	6	9
23678-10-18***	18	26	31	27	27	6	9
23678-10-18***	18	26	31	36	36	6	9
23678-10-18***	18	26	31	46	46	6	9
23678-10-18***	18	26	31	56/66/76/86/96/116/136	56	6	9
23678-10-20***	20	26	31	17	17	6	9
23678-10-20***	20	26	31	22	22	6	9
23678-10-20***	20	26	31	27	27	6	9
23678-10-20***	20	26	31	36	36	6	9
23678-10-20***	20	26	31	46	46	6	9
23678-10-20***	20	26	31	56/66/76/86/96/116/136	56	6	9
23678-10-22***	22	30	35	17	17	6	9
23678-10-22***	22	30	35	22	22	6	9
23678-10-22***	22	30	35	27	27	6	9
23678-10-22***	22	30	35	36	36	6	9
23678-10-22***	22	30	35	46	46	6	9
23678-10-22***	22	30	35	56	56	6	9
23678-10-22***	22	30	35	66	66	6	9
23678-10-22***	22	30	35	76/86/96/116/136/156	76	6	9
23678-10-24***	24	30	35	17	17	6	9
23678-10-24***	24	30	35	22	22	6	9
23678-10-24***	24	30	35	27	27	6	9
23678-10-24***	24	30	35	36	36	6	9
23678-10-24***	24	30	35	46	46	6	9
23678-10-24***	24	30	35	56	56	6	9
23678-10-24***	24	30	35	66	66	6	9
23678-10-24***	24	30	35	76/86/96/116/136/156	76	6	9
23678-10-30***	30	42	47	22	22	6	9
23678-10-30***	30	42	47	27	27	6	9
23678-10-30***	30	42	47	36	36	6	9
23678-10-30***	30	42	47	46	46	6	9
23678-10-30***	30	42	47	56	56	6	9
23678-10-30***	30	42	47	66	66	6	9
23678-10-30***	30	42	47	76	76	6	9
23678-10-30***	30	42	47	86	86	6	9
23678-10-30***	30	42	47	96/116/136/156/176/196	96	6	9
23678-10-32***	32	42	47	22	22	6	9
23678-10-32***	32	42	47	27	27	6	9
23678-10-32***	32	42	47	36	36	6	9
23678-10-32***	32	42	47	46	46	6	9
23678-10-32***	32	42	47	56	56	6	9
23678-10-32***	32	42	47	66	66	6	9
23678-10-32***	32	42	47	76	76	6	9
23678-10-32***	32	42	47	86	86	6	9
23678-10-32***	32	42	47	96/116/136/156/176/196	96	6	9
23678-10-40***	40	54	60	36	36	10	12
23678-10-40***	40	54	60	46	46	10	12
23678-10-40***	40	54	60	56	56	10	12
23678-10-40***	40	54	60	66	66	10	12

## 商品概述

订货号	D	D1	D2	L	L1	L2	L3
23678-10-40***	40	54	60	76	76	10	12
23678-10-40***	40	54	60	86	86	10	12
23678-10-40***	40	54	60	96	96	10	12
23678-10-40***	40	54	60	116/136/156/176/196/216/246	116	10	12
23678-10-42***	42	54	60	36	36	10	12
23678-10-42***	42	54	60	46	46	10	12
23678-10-42***	42	54	60	56	56	10	12
23678-10-42***	42	54	60	66	66	10	12
23678-10-42***	42	54	60	76	76	10	12
23678-10-42***	42	54	60	86	86	10	12
23678-10-42***	42	54	60	96	96	10	12
23678-10-42***	42	54	60	116/136/156/176/196/216/246	116	10	12